

# *Schafer & Vater* *Figural Character Pitchers*



The American Toby Jug Museum

# Schafer & Vater

## Figural Character Pitchers

Version A.1  
February 2020

This e-book is a living document. It will be revised and re-issued periodically, incorporating updated information, adding new photos, and expanding the knowledge of Schafer & Vater figural character pitchers through additional research and the generous contributions of the collecting community.

Any collector, dealer, auction house, museum, or other individual or organization wishing to contribute to this publication, please e-mail information and photos to: [americantobyjugmuseum@gmail.com](mailto:americantobyjugmuseum@gmail.com).

Contributors will be recognized for the information they share.

The authors may be contacted at:

The American Toby Jug Museum  
910 Chicago Avenue, Suite 105  
Evanston, Illinois  
60202 USA

Telephone: (877) TOBYMUSEum or (847) 869-1122 ext. 22      Fax: (847) 869-0441  
E-mail: [americantobyjugmuseum@gmail.com](mailto:americantobyjugmuseum@gmail.com) or [davidfastenau@yahoo.com](mailto:davidfastenau@yahoo.com)

Copyright © 2020 by The American Toby Jug Museum, Stephen M. Mullins and David C. Fastenau

All rights reserved. No part of this work may be reproduced or used in any form or by any means ~ graphic, electronic, or mechanical, including photocopying or information storage and retrieval systems ~ without written permission from the authors and the American Toby Jug Museum. The scanning, uploading and distribution of this e-book or any part thereof via the Internet or via any other means without the permission of the authors is illegal and punishable by law. Please share only authorized editions and do not participate in or encourage the electronic piracy of copyrighted materials.

Front Cover Photo: Clockwise from top left - Schafer & Vater Mother Goose wearing Bonnet, Oriental Grinning, Oriental with Bird, Maid with Fan, Dutch Woman, and Milkmaid Cow figural character pitchers

# Origin & Development of the Figural Character Pitcher

The figural character pitcher is descended from a long line of anthropomorphic vessels from ancient times. Long before recorded history, images of living things were being made from clay. Archeologists have found evidence of pottery figures dating back to the Stone Age, and some think such figures were being made even before utilitarian earthenware pots and pitchers.

Pottery figures over 6,000 years old have been found in Egypt and figural pitchers over 4,000 years old have been discovered in Crete, home of the Ancient Minoan civilization. Numerous examples of ancient jugs, cups, pots and other vessels made in the likeness



Examples of ancient bottles and pouring vessels circa 4000-2000 BC

of humans, animals and mythical beings have been unearthed in Greece, Italy, and throughout the Roman Empire, including Great Britain. Over the same period, ancient Peruvian and other South American civilizations produced a wide range of hand molded figural

jugs and vessels. In North America as well, many examples of jugs and bottles made in human likeness have been discovered.

By the mid-1500s, small faïence pitchers in the form of a seated man or woman, called Jacquot and Jacqueline, became popular in France. These human shaped pitchers recall the romantic story of Jacqueline de Bavière, a courageous countess who escaped imprisonment by her cousin and arch rival to lead her troops and successfully preserve her heritable lands.



Jacquot and Jacqueline faïence pitchers

The next major development in figural pitchers was the first appearance of the ubiquitous 18th century English Toby jug. The first Toby creator is not conclusively known. Some date Toby's creation to around 1750, but most believe it to be slightly later, somewhere between 1760 and 1770. Various historians have bestowed the honor of being Toby's creator on one of several well known potters of the period, including John Astbury, Thomas Whieldon, Ralph and Aaron Wood, as well as John Voyez, an apprentice of both Josiah Wedgwood and Ralph Wood.



Virtually overnight the Toby Jug became a popular figure in homes and taverns throughout Staffordshire and all of England. With a tricorne hat that was perfect for pouring, the primary purpose of the Toby Jug was as a beverage vessel, as was that of the Pots Jacqueline before him.

Whieldon Toby Jug circa 1765

Production of the figural Toby Jug grew through the late 18th and early 19th century with the creation of a wide variety of characters and derivative forms, including being produced in the beautiful Victorian majolica finish that swept the world after the 1851 Crystal Palace Great Exhibition in London.



Group of French and Belgian majolica figural pitchers

Although not strictly Toby or Character Jugs per the British vernacular, the production of figural character pitchers by German manufacturers, both prominent and lesser, in the early 20th century are a highly sought after collecting field in and of itself.

In the period before and after World war I, both Royal Tettau Porcelain, marketing under the trade name Royal Bayreuth, and Schafer & Vater, produced a wide variety of figural jugs in soft paste porcelain bisque and in several sizes, which were commonly referred to as cream, milk, water and lemonade pitchers. While production from both factories is highly desired, the Royal Bayreuth line is more actively sought after by collectors and commands a higher price.



Schafer and Vater figural character pitchers, from left to right: Snookums, Child in Hat, and Chantecler

Another major German manufacturer of figural character pitchers was W. Goebel Porzellanfabrik, which produced a large variety of characters from 1935 up through the 1980s. The Friar Tuck line is the most familiar and comes as a Character Jug, Toby Jug, tankard and in numerous derivative forms. When dressed in a red robe, he becomes Cardinal Tuck.

Other German manufactures that produced highly sought after figural pitchers were Sitzendorfer Porzellanmanufaktur in the 1930s and 1940s and Sandizell Porcelain in the 1950s and 1960s. Also, the Philadelphia firm of Eberling and Reuss imported numerous German figural pitchers, marketing them under the trade name Erphila. There is no record of which potteries produced these jugs, as the firm imported wares from many factories in Germany, Czechoslovakia and Austria. However, the similarity of the Dickens figural pitchers to the Goebel ones, makes it highly likely those were produced by the latter.

# Schafer & Vater

## Rudolstadt, Germany

Founded by Gustav Schafer and Gunther Vater in 1890, Schafer & Vater was a high quality porcelain manufacturer located in Volkstedt Rudolstadt, Thuringa, Germany. The company enjoyed almost immediate success with its hard paste and soft paste porcelain designs. The firm closed in 1962 and the dormant factory was destroyed by the East German government in 1972.

Today the company is perhaps best known for its detailed and comical figural ware, many of which appear as figural character pitchers, match strikers, bottles and more. Its figural pitchers are

commonly found in full colorways or a blue colorway. Green, pink and red colorways are more scarce, but also known.

Schafer and Vater marked its products with an impressed R inside a star and topped by a crown, although many examples are found unmarked. Four digit model numbers can also be found impressed on the base of the pieces and some pieces are stamped Made in Germany in black or blue ink.



American Indian figural pitcher standing 5 1/4 inches tall



At left, Apple figural creamer 2 1/2 inches tall with a twig forming the handle of the creamer

Above, this Apple creamer is a part of a condiment set with sugar, creamer, salt and pepper



Art Nouveau Lady figural creamer standing 4 1/4 inches tall with her hair forming the handle of the pitcher, she is part of a set with sugar jar

Blackamoor figural pitchers 5 inches tall at left and 3 1/2 inches tall at right

Blackamoors, or Black Moors, were people of color from North Africa who worked as servants and slaves in wealthy European households in the 1500s to 1700s.

Blackamoor is a European art style from the Early Modern period depicting highly stylized figures, usually African males but sometimes other non-European races, in subservient or exotic form.



Bear with Muff figural character pitchers standing 5 inches tall on left and 4 1/2 inches tall on right



**Schafer & Vater  
Rudolstadt, Germany**



Boy with Umbrella figural character pitchers, from left to right ~  
5 1/4 inches tall, 4 1/4 inches tall, and 3 1/2 inches tall



Bull in Monk's Habit figural pitcher  
standing 6 1/2 inches tall with the  
bull's tail forming the handle of the  
pitcher



Group of Cat figural pitchers, version 2, from left to right ~  
5 3/4 inches tall in orange colorway, 5 3/4 inches tall in black/white colorway,  
and 3 1/2 inches tall in brown/white colorway,  
the tail forms the handle of the pitcher



Cat figural pitcher, version 1, standing 5 3/4 inches tall  
with the cat's tail forming the handle of the pitcher



Chantecler Rooster handle-less  
figural creamer, 5 3/4 inches tall at  
left and 2 3/4 inches tall above

Chantecler is the main protagonist  
in Edmond Rostand's 1910 play *The  
Chantecler*.

Rostand, a French poet, wrote the  
four act verse play centered on the  
themes of idealism and spiritual  
sincerity as dramatized by the cast  
of barnyard animals.

Child in Hat figural creamer  
standing 3 inches tall

This creamer can also be  
found in a blue/white  
colorway and pink colorway.



Schafer & Vater  
Rudolstadt, Germany



Cow in Dress figural pitchers with the cow's tail forming the handle of the pitcher, standing 6 1/4 inches tall on left and 3 1/2 inches tall on right



Cyrano figural creamer with a flower at the top of the handle standing 3 3/4 inches tall

Cyrano can be found both in a blue and pink colorway.



Devil with Wings figural character pitchers standing 4 3/4 inches tall on left and 3 1/4 inches tall on right, his wings form the pitcher's opening



Dutch Woman figural pitchers, 5 3/4 inches tall on left and 4 3/4 inches tall on right



Fat Lady with Cat figural pitcher 4 1/2 inches tall



Rare Father Time figural pitcher

Schafer & Vater  
Rudolstadt, Germany



Gnome figural creamer,  
3 3/4 inches tall with his hat  
forming the handle of the  
creamer



Rare Gnome Riding Pig figural creamer,  
4 1/2 inches tall with his hat forming  
the handle of the creamer, note the firm grip the  
Gnome has on the pig's ear.



Goat wearing Coat figural creamers,  
5 inches tall on left and 4 inches tall on right



Goat Sitting Down figural pitcher group,  
from left to right ~  
6 1/2 inches tall in yellow coat colorway,  
5 1/2 inches tall in red coat colorway,  
and 5 1/2 inches tall in brown coat colorway

Gorilla wearing Bowler  
figural pitcher group, from left to right ~  
6 1/2 inches tall,  
5 3/4 inches tall,  
and 4 inches tall



Schafer & Vater  
Rudolstadt, Germany



with his feet forming the handle of the creamer

Photo courtesy of Kovels.com



Lady teapot set, from left to right -  
teapot, sugar, and creamer

Lady figural creamer  
standing 3 1/2 inches tall



Maid with Cow figural pitcher  
standing 4 3/4 inches tall



Maid with Fan figural pitchers,  
4 1/4 inches tall on left and 3 1/4 inches tall on right



Maid with Keys figural character pitchers, from left to right -  
5 3/4 inches tall, 5 inches tall, and 3 1/2 inches tall



Schafer & Vater  
Rudolstadt, Germany



Maid with Pitcher figural pitcher standing 4 3/4 inches tall



Maid with Purse figural character pitchers, from left to right ~ 5 1/2 inches tall, 4 1/2 inches tall, and 4 inches tall



Milkmaid Cow figural pitcher 6 1/2 inches tall



Milkmaid Milking Cow figural pitcher version 1, front and back, standing 5 1/2 inches tall



Milkmaid Milking Cow figural pitcher version 2, standing 5 1/2 inches tall



Milkmaid Milking Cow version 2 front and back of pitcher, note the woman's head change and plain modeling on the back of version 2 compared to version 1



Minstrel Playing Mandolin figural pitchers, 4 3/4 inches tall on left and 3 1/4 inches tall on right

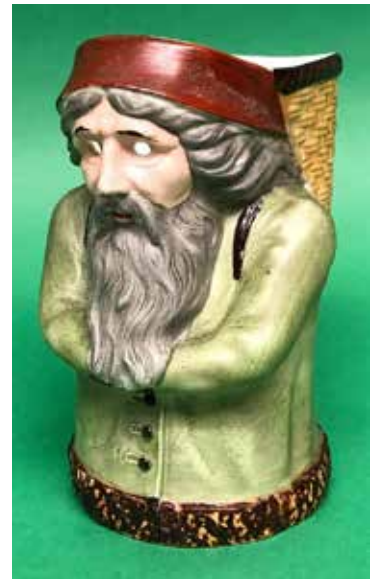
Schafer & Vater  
Rudolstadt, Germany



Mother Goose wearing Bonnet figural creamer standing 4 inches tall



Mule figural pitcher standing 5 inches tall



Rare Old Man with Basket handle-less figural pitcher standing 5 inches tall



Oriental Grinning figural pitchers 5 inches tall at left and 3 1/4 inches tall at right, the Oriental's pigtail forms the handle of the pitcher



Oriental with Baby figural character pitchers, from left to right ~ 6 inches tall, 5 inches tall, and 3 1/2 inches tall, the Oriental's pigtail forms the handle of the pitcher



Oriental with Bird figural character pitchers, from left to right ~ 6 1/4 inches tall, 5 1/4 inches tall, 4 1/4 inches tall, and 3 3/4 inches tall; the Oriental's pigtail forms the handle of the pitcher

Schafer & Vater  
Rudolstadt, Germany



Oriental with Monkey figural character pitchers, from left to right ~ 6 1/2 inches tall, 5 1/2 inches tall, 4 inches tall, and 3 3/4 inches tall, note the monkey's tail forms the handle of the pitcher



Rare Parrot figural creamer standing 5 1/4 inches tall



Pig in Monk's Habit figural character pitchers standing 5 1/2 inches tall on left and 4 inches tall on right



Scheherazade figural humididor standing 4 1/4 inches tall in pink colorway on left with lid and blue colorway on right

Scheherazade is a legendary Persian queen who is the storyteller in *One Thousand and One Nights*. The story, which was written many hundreds of years ago, tells of a Persian king who married a young girl every night. At the end of every night he would send his new wife to have her head chopped off.



Snookums figural pitcher standing 3 3/4 inches tall

Snookums was the name of the baby added in 1907 to the popular *New York World* comic strip "The Newlyweds" by U.S. cartoonist George McManus. This creamer may have been commissioned in Snookums' likeness by *New York World* or McManus himself.



Standing Cow with Hat figural creamer measuring 3 3/4 inches tall, the cow's tail forms the handle of the creamer

# Schafer & Vater Rudolstadt, Germany

The following table lists the heights of the known Schafer & Vater figural character pitchers.  
The model numbers, where known, and included next to the pitcher's name.

Pitcher Name	Height, inches
American Indian	5 1/4
Apple 7578	2 1/2
Art Nouveau Lady 4922	4 1/4
Blackamoor 7181	5 4 3 1/2
6493	6
Bear with Muff 6512	5 1/4 4 1/2 3 1/2
Boy with Umbrella	5 1/4 4 1/4 3 1/2
Bull in Monk's Habit	6 1/2
Cat ~ two versions	ver 1 5 3/4 ver 2 5 3/4 ver 2 3 1/2
Chantecler Rooster 7542	5 3/4
7003	2 3/4
Child in Hat - 7881	4 1/2 3
Cow in Dress	6 1/4 3 1/2
6517	
Cyrano 4076	3 3/4
Devil with Wings	5 1/4 4 3/4 4 3 1/4
Dutch Woman 8326	5 3/4 4 3/4
Fat Lady with Cat	4 1/2
Father Time	
Gnome	3 3/4

Pitcher Name	Height, inches
Gnome Riding Pig	4 1/2 3 3/4
Goat Sitting Down	6 1/2 5 1/2 4 3 1/2
6516	5 1/2 5
Goat Wearing Coat 6517	4 3 1/2
6424	6 1/2 5 3/4 4 3 3/4
Gorilla Wearing Bowler	
Jester	3 3/4
Lady	3 1/2
Maid with Cow	7 4 3/4
Maid with Fan	5 4 1/4 3 1/4
Maid with Keys	5 3/4 5 4 3 1/2
Maid with Pitcher	4 3/4
Maid with Purse	5 1/2 4 1/2 4 3 1/2
Milkmaid Cow	6 1/2
Milkmaid Milking Cow ~ two versions	5 1/2
Minstrel Playing Mandolin	4 3/4 4 3 1/4

Pitcher Name	Height, inches
Mother Goose 6452	6 1/2 5 1/2 4 3 1/2
Wearing Bonnet	
Mule	5
Old Man with Basket	5
Oriental Grinning 7436	5 4 3 1/4
Oriental with Baby 6859	6 5 4 3 3/4
Oriental with Bird 6689	6 1/4 5 1/4 4 1/4 3 3/4
6802	6 1/2
6822	5 1/2
Oriental with Monkey	4 3 3/4
Parrot 6157	5 1/4
Pig in Monk's Habit	6 1/2 5 1/2 4 3 1/2
Scheherazade humidor	4 1/4
Snookums 7157	3 3/4
Standing Cow with Hat	5 4 3 3/4
Welsh Lady 8838	4 3/4



A collection of Schafer & Vater figural shot glasses, all 1 1/2 inches tall, clockwise from upper left ~

Child in Hat in same design as creamer, American Indian, Skull, happy and sad Man two-sided shot glasses, Devil, Gentleman, and happy and sad two-sided Nuns with an inscription that translates as "Alcohol is a Sin" on the sad side and "but a Pleasant One" on the happy side



## Contributors

Our thanks for the generous contributions of the following people and organizations:  
Beth Mullins Scales and Sandy Lachler for their photography expertise,

## Bibliography

Fastenau, David C. & Mullins, Stephen M.; *Toby & Character Jugs of the 20th Century*. (Evanston, Illinois: Kevin James Publishing, 1999.)  
Schuler, Vic; *British Toby Jugs*. (London, UK: Keving Francis Publishing Ltd., 1988.)  
Schuler, Vic; *Collecint British Toby Jugs*. (London, UK: Keving Francis Publishing Ltd., 1994.)  
Wikipedia: The Free Encyclopedia. Wikimedia Foundation, Inc.

## About the Authors

**Steve Mullins** was a graduate of Dartmouth College and the University of Michigan Business School and was Chairman of a Chicago based real estate investment firm. He started collecting Toby and Character jugs as a teenager seventy years ago. Today the collection numbers over 8,300 jugs from around the world, dating from those earliest produced in the 1760s to the latest 21st Century ones. The collection is now on display in the American Toby Jug Museum in Evanston, Illinois.

**David Fastenau** is a graduate Engineer from Iowa State University and Santa Clara University Leavey School of Business, and is currently semi-retired on Kauai with his wife, Michelle. David's collecting passion for figural pitchers and Toby jugs was spurred when he inherited a small collection of Royal Doulton Character and Toby jugs from his grandmother. His collection continues to grow and now numbers over 800 full bodied figural pitchers and Toby jugs. Together, he and his wife have raised five children and were recently blessed with their second grandchild.



The Schafer & Vater cabinet at the American Toby Jug Museum

# World War II Allied Leaders Toby Jug Collection

Released in 2017, the new Wilkinson World War II Allied Leaders Collection has been inspired by the original World War I Allied Commanders Toby Jug set designed by F. Carruthers Gould and produced by A. J. Wilkinson, Ltd. between 1915 and 1919. This iconic set of eleven jugs featured famous World War I statesmen and military leaders. Today, the pieces in this original series have become some of the most sought after toby jugs ever produced. The Wilkinson company's plans for a similar WWII collection was cancelled due to the demands of the war effort in Britain and the series was never created.

The American Toby Jug Museum in Evanston, Illinois (of which co-author of this Supplement, Steve Mullins is the Curator) has brought this idea to fruition with a special commission of Toby jugs based on the greatest World War II military and political leaders. This collection was modeled by Ray Noble, one of England's most gifted and renowned modelers. Following the Wilkinson style, each new Toby is eleven inches tall and holds a symbolic artifact. Further iconic details and quotes are incorporated in the handle and base designs. The collection was produced in Staffordshire England by Bairstow Manor Pottery and each Toby jug is handcrafted and hand painted by master craftsmen.

Own a piece of history and add this historic series to your collection! Call 877-TOBYMUSEum to reserve your set or purchase individual jugs.



## World War II Allied Leaders Collection

Top row from left to right: General Dwight D. Eisenhower, Field Marshall Bernard Montgomery, Admiral Louis Mountbatten, General George S. Patton, General Douglas MacArthur, Admiral Chester W. Nimitz

Bottom row from left to right: Prime Minister Winston Churchill, President Franklin D. Roosevelt, King George VI, Premier Joseph Stalin, Generalissimo Chiang Kai-Shek, General Charles De Gaulle



# The American Toby Jug Museum

Showcasing the largest collection of toby and character jugs in the world. On display are over 8,300 pieces illustrating the evolution of the Toby jug form from its inception around 1765 to the present day.

The centerpiece of the Museum includes more than 1,500 Royal Doulton Character Jugs, Toby Jugs, Derivatives and Colorways thereof. The highlight of the collection encompasses 150 plus rare and unique Doulton prototype jugs, never before brought together in one location.



The next time you are in the Chicago area, plan on spending a day with us at The American Toby Jug Museum. The museum is located in Evanston, Illinois, just a short drive or train ride north of Chicago.

Individual and group tours are welcome and are available by appointment only. Admission is always free! We hope to see you soon at:

The American Toby Jug Museum  
910 Chicago Avenue  
Evanston, Illinois  
60202 USA

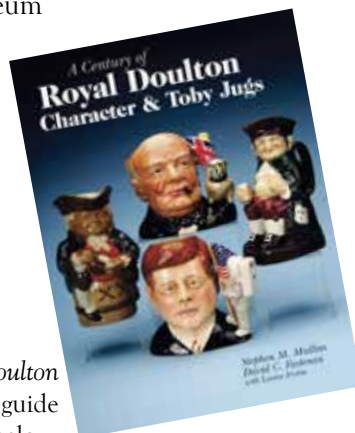
Visit The American Toby Jug Museum on-line at:

[www.tobyjugmuseum.com](http://www.tobyjugmuseum.com)

or chat with us on Facebook at  
The American Toby Jug Museum

*A Century of Royal Doulton  
Character & Toby Jugs*  
with Companion Price Guide

by Stephen M. Mullins  
David C. Fastenau



Autographed copies of *A Century of Royal Doulton Character & Toby Jugs* and the companion price guide may be obtained directly from the address below. Mention you purchased this Supplement and receive an additional \$10 discount on the purchase of the book.

The American Toby Jug Museum  
910 Chicago Avenue  
Evanston, Illinois  
60202 USA  
877-TOBYMUSEum

Please call to check our opening hours  
or to make an appointment:  
877-TOBYMUSEum

*A Century of Royal Doulton Character & Toby Jugs* is a unique reference book in the collectives field. The most comprehensive book ever published on this 20th Century collecting phenomenon, it provides the most extensive information ever gathered together in a single volume. With an informative profile of every character, the text is lavishly illustrated with over 2,000 large color photographs of more than 1,300 separate jugs and derivatives, most of which never before have been compiled together in colored print.

Photographs of every Royal Doulton production jug and derivative of the past century produced to the date of publication are included, plus those of more than 100 prototype jugs, many of which will be new to the collector's eye.

The scope, details and pictorial abundance set this book apart from any other reference book on the subject.